

## Refrigeration Equipment 2-Half Door Full Height Refrigerator 27" Long

ITEM # \_\_\_\_\_

MODEL # \_\_\_\_\_

NAME # \_\_\_\_\_

SIS # \_\_\_\_\_

AIA # \_\_\_\_\_



**738280 (KCHRI27R2HDR)** 2-Half Door Full Height Refrigerator 27" Long

### Short Form Specification

Item No. \_\_\_\_\_

2 half door refrigerator with exterior top, back, and bottom panels in galvanized steel, exterior side panels in 430 stainless steel; interior back, side, top and bottom panels in 304 stainless steel. Control with cabinet temperature display. Self-closing and on-site reversible door feature with lock and key.

Cabinet capable of accepting a full-size sheet pan (18X26).

R290 gas in the refrigeration circuit.  
ETL Safety and Sanitation certifications.  
3/5 Years warranty.

### Main Features

- External temperature display.
- Half-door design minimizes cold air loss, improving energy efficiency and temperature consistency
- Removable gasket for easy cleaning operations.
- Fin & Tube Condenser improves performance in high temperature environments.
- Automatic Defrost Cooling System provides worry-free performance.
- Electronic Temperature Control, quick and simple to set, with control display for easy monitoring.
- Heavy duty Vinyl coated steel shelves.
- Cabinet completely insulated with high density polyurethane for low environmental impact.
- Bottom mounted cooling unit slides out for easy access and cleaning.
- Adjustable shelves for flexible storage
- Removable rubber bumper guards for airflow spacing and shock absorption
- Cabinet capable of accepting a full-size sheet pan (18X26)

### Construction

- Stainless steel interior and exterior, durable and easy to clean for daily commercial use.
- Self-closing door with 90-degree stay-open feature.
- Heavy duty casters.
- Lockable door.
- Pre-wired heavy duty power cord.
- Heavy duty door hinges.
- Magnetic gasket removable without tools for easy cleaning.
- Door reversible on site

### Sustainability

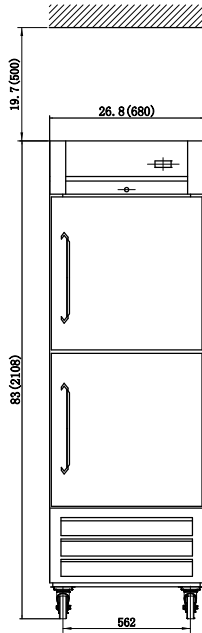
- CFC and HCFC free, highly ecological refrigerant type: R290 (ecological gas in foam: cyclopentane). Hydrocarbon refrigerant gas R290 for the lowest environmental impact (GWP=3), to reduce green house and ozone depletion effects.
- Hydrocarbon refrigerant gas R290 for the lowest environmental impact (GWP=3) - CFC and HCFC free.
- High efficiency components to minimize the energy consumption still guaranteeing the highest performances.
- Interior LED light to save energy and for best internal visibility.
- 60 mm insulation for energy saving.

### Optional Accessories

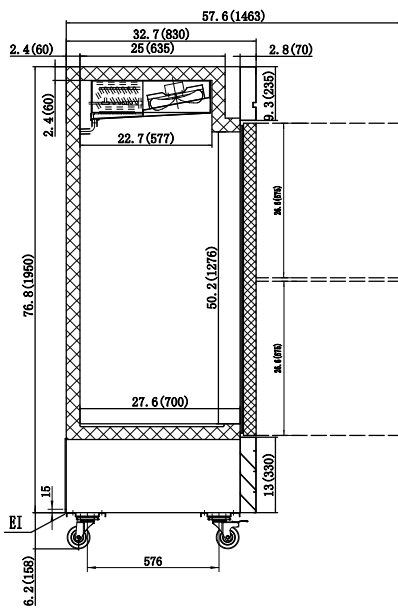
- 1 Adjustable Foot PNC 206445
- Shelf for 27" Reach-In (Solid Door) PNC 880590
- Shelf clips (4-pack) PNC 880611

APPROVAL: \_\_\_\_\_

**Front**

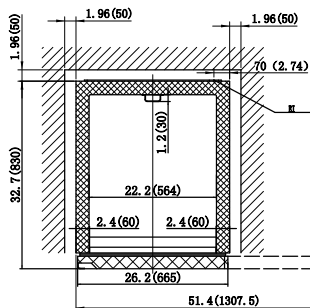


**Side**



EI = Electrical connection

**Top**



## Electric

Supply voltage:	115 V/1 ph/60 Hz
Electrical power, max:	0.31 kW
Plug type:	USA NEMA 5-15P

## Capacity:

Gross capacity:	21 cu.feet
-----------------	------------

## Key Information:

Number and type of grids (included):	3 - Vinyl-Coated Steel
Warranty:	3 / 5 years
Door hinges:	Right Side
External dimensions, Width:	26 3/4" (680 mm)
External dimensions, Depth:	32 11/16" (830 mm)
External dimensions, Height:	83" (2108 mm)
Number and type of doors:	2 Full
Internal Dimensions (depth):	27 1/2" / (698.5 mm)
Internal Dimensions (height):	50 3/16" / (1275.08 mm)
Internal Dimensions (width):	22 3/16" / (563.88 mm)
Shipping height:	84 5/8" (2150 mm)
Shipping weight:	309 lbs (140 kg)
Shipping volume:	49.91 ft <sup>3</sup> (1.41 m <sup>3</sup> )
Type of external material:	Stainless Steel
Type of internal material:	304 AISI
Approvals	ETL C&US;ETL SANITATION

## Refrigeration Data

Condenser type:	Fin & tube
Operating temperature min.:	32 °F
Compressor power:	1/5 hp
Operating temperature max.:	41 °F
Defrost type:	Auto Defrost

## Sustainability

Current consumption:	3 Amps
Refrigerant type:	R290
GWP Index:	3
Refrigerant weight:	85 g

Refrigeration Equipment  
2-Half Door Full Height Refrigerator 27" Long

The company reserves the right to make modifications to the products without prior notice. All information correct at time of printing.

